

Is the theft of access box lids getting you down?

The theft of access box and manhole lids for sale as scrap metal is an ongoing and ever increasing problem. Nextube has the solution for its range of Stakbox access boxes. Introducing the lockable, vandal resistant, Stakbox lid which allows easy yet secure access.

- Simple to retrofit to existing Stakbox frames.
- Screw locking mechanism is made of stainless steel and won't corrode or seize.
- Robust construction.
- Lids are hot dipped galvanised for corrosion protection.
- Locking screw is countersunk to resist tampering.

Security

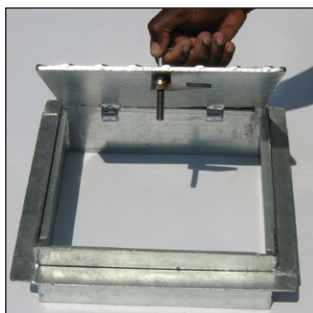
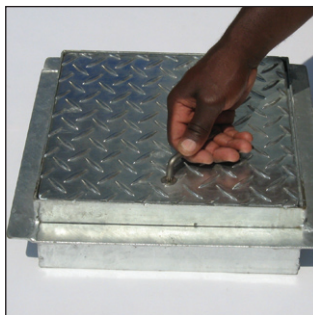
The tamper proof system makes it virtually impossible to remove the lid once the Stakbox frame has been embedded in concrete.

Our standard locking screw requires a special hexalobular pin key to open it. This key can be purchased separately. Other security screw designs can be supplied on request to suit every security level requirement right up to custom made unique designs.

Sizes

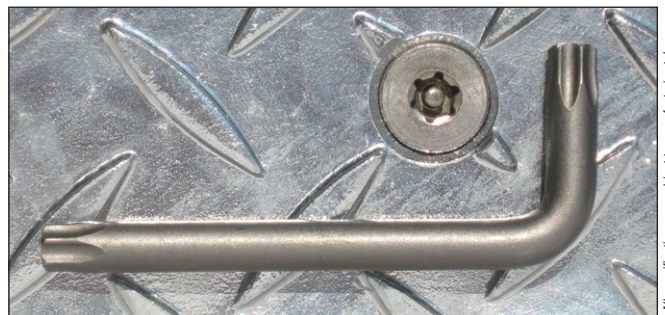
Five lid sizes are available to compliment the range of Stakbox sizes and they are interchangeable with existing Stakbox frames.

Nominal lid size (mm)	Number of latches
300 x 300	1
300 x 450	1
450 x 450	2
450 x 600	2
600 x 600	2



Corrosion resistance

The lids are hot dip galvanised to SABS ISO 1461. The locking mechanisms are manufactured from stainless steel to ensure a long trouble free life.



All specifications are subject to manufacturing tolerances

Nextube (Pty) Ltd

Tel : +27 (0)11 708 1659
Fax : +27 (0)11 708 2192
Email : info@nextube.co.za
Web : www.nextube.co.za

